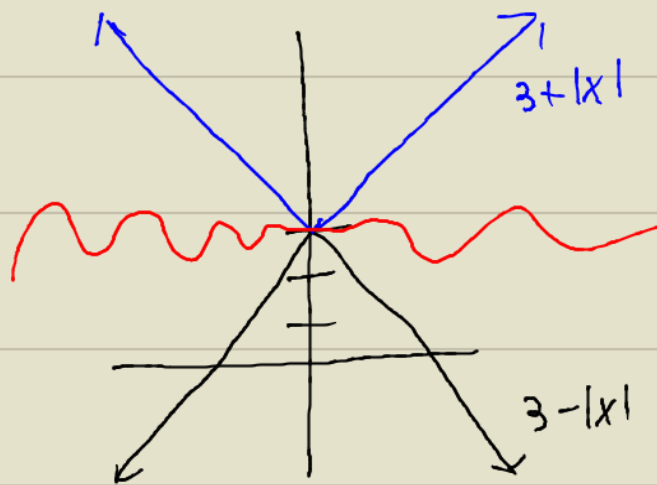


$$20. \lim_{x \rightarrow c} f(x), c=0$$

$$3 - |x| \leq f(x) \leq 3 + |x|$$



$$\begin{aligned} \lim_{x \rightarrow 0} 3 - |x| \\ = 3 - |0| \\ = 3 \end{aligned}$$

$$\begin{aligned} \lim_{x \rightarrow 0} 3 + |x| \\ = 3 + |0| \\ = 3 \end{aligned}$$

$$\lim_{x \rightarrow 0} f(x) = 3$$