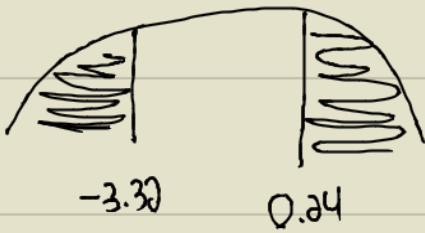
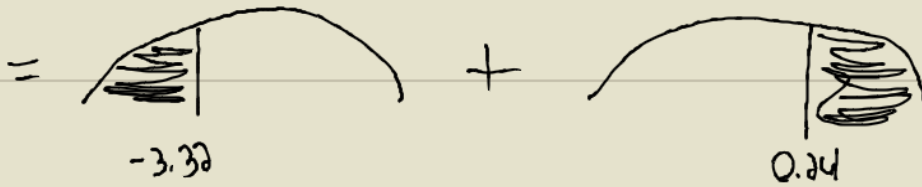


4.

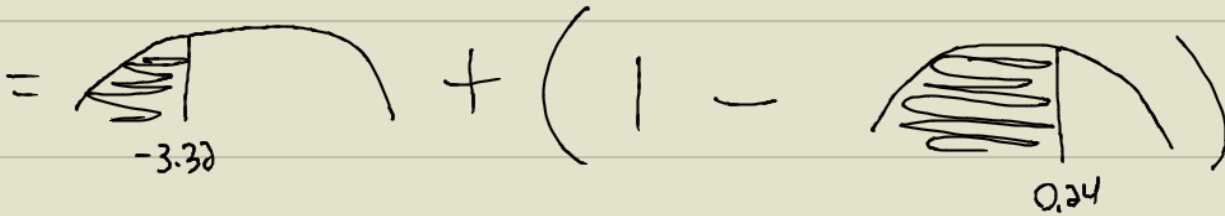


-3.32

-3.3 + 0.02



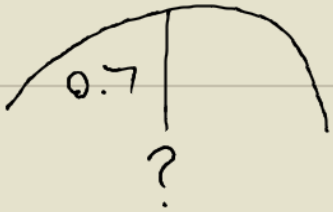
0.24

0.2 + 0.04

$$= 0.0005 + (1 - 0.5948)$$

$$= \boxed{0.4057}$$

5.

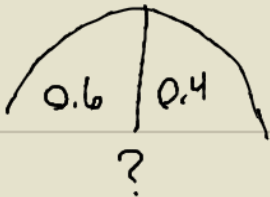


0.7000

$$0.5 \oplus 0.02$$

$$= \boxed{0.52}$$

6.



0.6000

$$0.2 \oplus .05$$

$$\boxed{0.25}$$