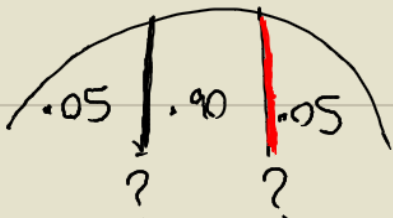


7.



.0500

-1.6 (+) 0.045

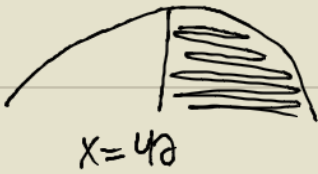
-1.645

AREA TO LEFT IS 0.9500

1.6 (+) 0.045

1.645

8. $\mu=30, \sigma=5$



$x=40$

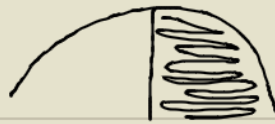
(1st)

$$z = \frac{x - \mu}{\sigma}$$

$$z = \frac{40 - 30}{5}$$

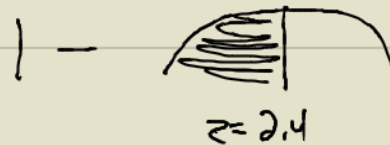
$$z = \frac{10}{5}$$

$z=2.4$



$z=2.4$

2.40



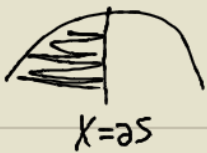
$z=2.4$

2.4 0.00

1 - .9918

.0082

9. $\mu=30, \sigma=5$



$x=25$

(1st)

$$z = \frac{x - \mu}{\sigma}$$

$$z = \frac{25 - 30}{5}$$

$$z = \frac{-5}{5}$$

$$z = -1$$



$z=-1$

-1.00

-1.0 0.00

.1587