

1. CLAIM: LOWER THAN 59
 $H_0: \mu \geq 59$
 $H_1: \mu < 59$

$$\mu = 59$$

$$n = 15$$

$$\bar{x} = 58$$

$$S = 1.2$$

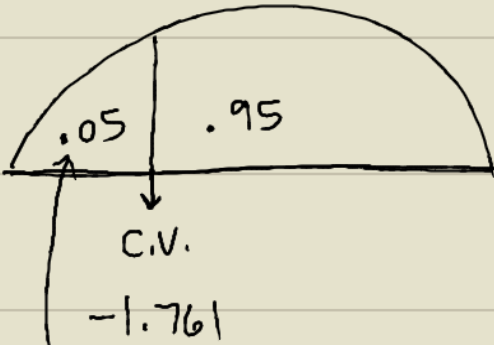
$$\alpha = .05$$

$$DF = n - 1$$

$$DF = 15 - 1 = 14$$

$$H_0: \leq, \geq, =$$

$$H_1: <, >, \neq$$



T.S.: T-TEST

$$T = -3.23$$

CONCLUSION

REJECT H_0

ACCEPT H_1

ACCEPT CLAIM

2. CLAIM: DIFF THAN 59
 $H_0: \mu = 59$
 $H_1: \mu \neq 59$

$$\mu = 59$$

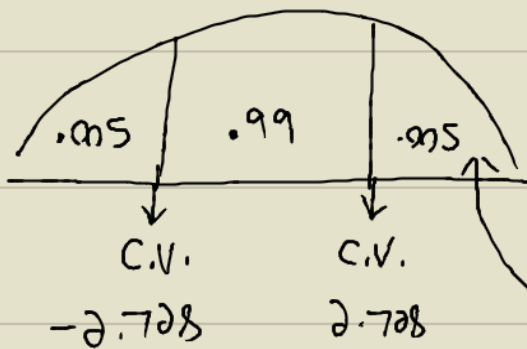
$$n = 35$$

$$\bar{x} = 63$$

$$S = 2.3$$

$$\alpha = .01$$

$$DF = 34$$



TS: T-TEST

$$T = 10.29$$

CONC: REJECT H_0
 ACCEPT H_1
 ACCEPT CLAIM