

Functions Involving Radicals

In problems 1-6, evaluate each radical function at the indicated values

1. a) $2\sqrt{2}$ b) 5	2. a) $3\sqrt{3}$ b) $2\sqrt{5}$
3. a) $-5\sqrt{2}$ b) $-3\sqrt{10}$	4. a) 2 b) $3^3\sqrt{2}$
5. a) $\frac{\sqrt{5}}{5}$ b) $\frac{\sqrt{5}}{3}$	6. a) $\frac{2^3\sqrt{3}}{3}$ b) $\frac{\sqrt[3]{50}}{5}$

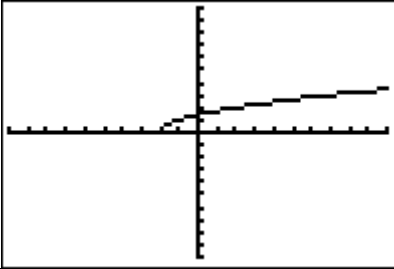
In problems 7-12, find the domain of the radical function.

7. $x \geq -3$ or $[-3, \infty)$	8. $x \geq \frac{1}{5}$ or $\left[\frac{1}{5}, \infty\right)$
9. $(-\infty, \infty)$	10. $(-\infty, \infty)$
11. $x \geq -7$ or $[-7, \infty)$	12. $(-\infty, \infty)$

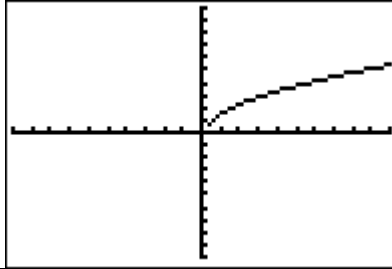
Functions Involving Radicals

In problems 13-17, Graph the function

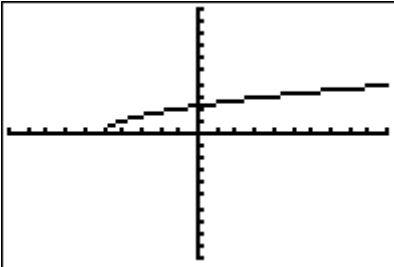
13.



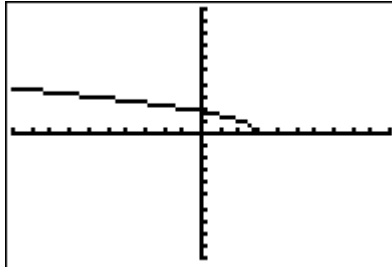
14.



15.



16.



17.

