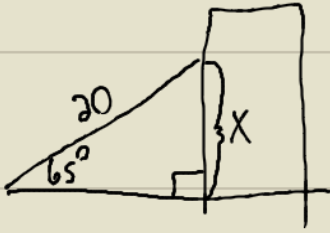


9.



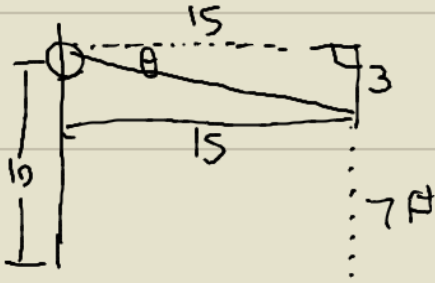
$$\sin 65^\circ = \frac{\text{opp}}{\text{hyp}}$$

$$\sin 65^\circ = \frac{X}{20}$$

$$20 \sin 65^\circ = X$$

$$X = 18.13$$

10.



$$\tan \theta = \frac{\text{opp}}{\text{adj}}$$

$$\tan \theta = \frac{3}{15}$$

$$\tan^{-1}(\tan \theta) = \tan^{-1}\left(\frac{3}{15}\right)$$

$$\theta = 11.31^\circ$$